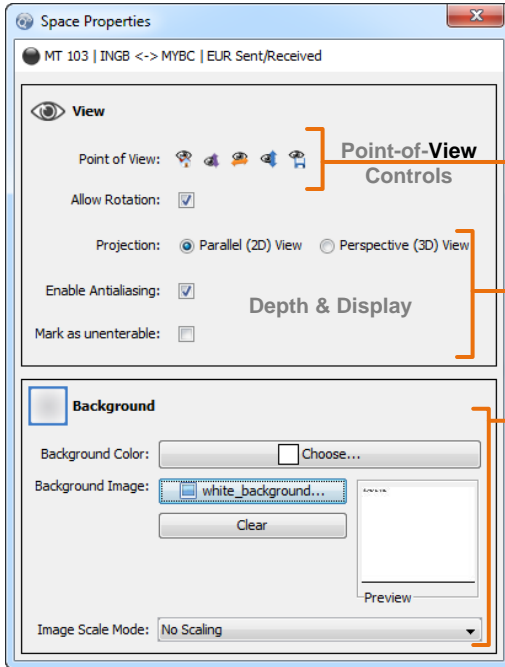


The Space Properties and Axes & Grids panels are one-stop shops where you can customize your space to show the most compelling results.

## Space Properties



**Home View**-View the perspective on the current space  
**Z Perspective**-Look down the Z (purple) axis (Y-up)  
**X Perspective**-Look down the X (orange) axis (Z-up)  
**Y Perspective**-Look down the Y (blue) axis (X-up)  
**Save Entry/Default View**-Save perspective as default view

**Allow Rotation**- Lock or unlock rotation in the scene  
**Parallel (2D) View**-Switch to Parallel (2D) View  
**Perspective (3D) View**-Switch to Perspective (3D) View  
**Enable Antialiasing**-Smooth out jagged edges  
**Mark as unenterable**-for storage spaces with heavy content

**Background Color**-Choose a color for the background  
**Background Image**-Choose an image for the background  
**Image Scale Mode**-Choose how background image displays

## Axis/Grid Appearance

**Show**-Turn on/off: Axes, XY Grid, YZ Grid, XZ Grid

**Grid Color**-Choose a grid color option

**Axis Labels**-Override labels/show marks for X, Y or Z axis

## Demarcations

**Show Demarcations**-Turn on/off demarcations

**Demarcation Group**-Choose a group for demarcation

**Time Demarcation**-Demarcate at regular intervals or key frames

## Axis/Grid Positions

**XY Grid Position**-Reposition the XY Grid

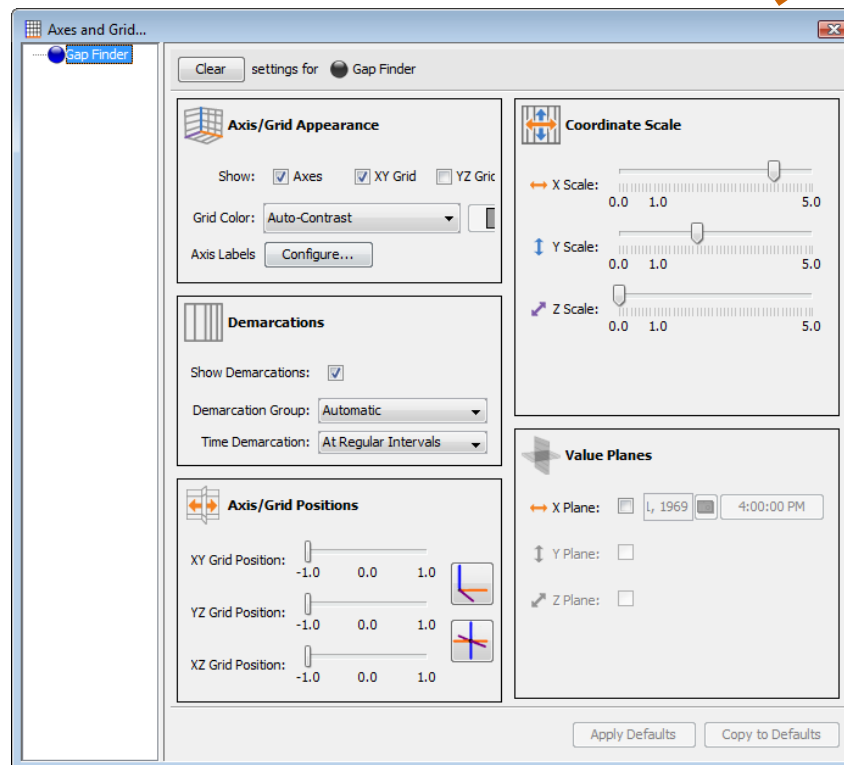
**YZ Grid Position**-Reposition the YZ Grid

**XZ Grid Position**-Reposition the XZ Grid

**Corner Chart**-Click to transform into a Corner Chart

**Center Chart**-Click to transform into a Center Chart

## Axis & Grid Controls



## Coordinate Scale

**X Scale**-Shorten or lengthen the X Scale

**Y Scale**-Shorten or lengthen the Y Scale

**Z Scale**-Shorten or lengthen the Z Scale

## Value Planes

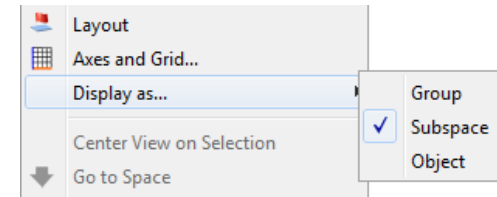
**X Plane**-Turn on a value plane for X

**Y Plane**-Turn on a value plane for Y

**Z Plane**-Turn on a value plane for Z

## Open groups as sub-spaces. Close as objects.

A new feature of Quantum4D enables users to view groups as objects or open sub-spaces. Right click a group and choose 'Display as.'



Select **object** to move the group off the central point of the space. Move by selecting the label for the parent group or object.

Select **sub-space** to see a unique Axis/Grid for the group. Once you have a group displayed as a sub-space, you can then modify the Axis and grids for that group separately from others.