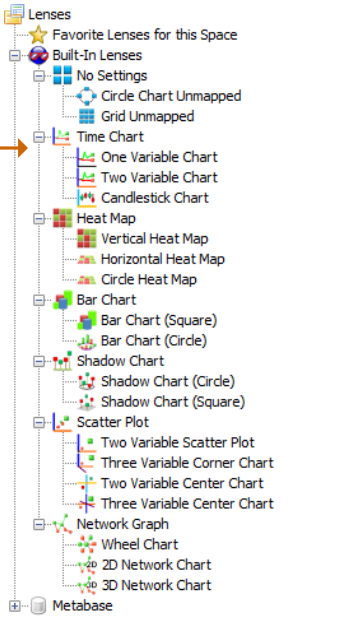
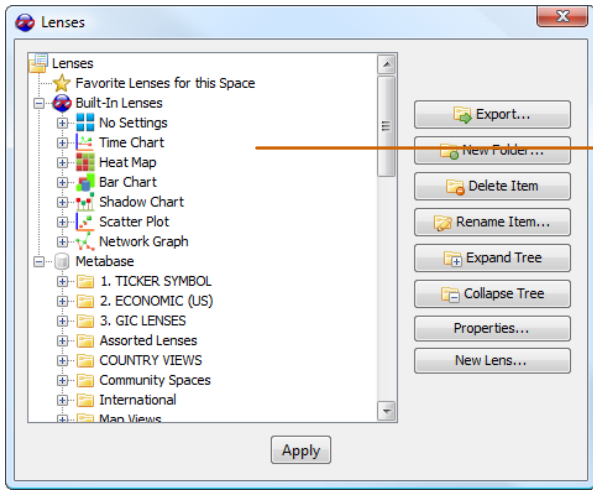


These are 'one-click' pre-configure lenses. You'll still need to choose which attribute you want to map to each feature (in the lens settings panel on the bottom), but these lenses will start you off with a few good configurations.



To access the lenses, simply click on the "apply lens" button on the toolbar. Expand "Built-in-Lenses" to see each Lens folder and the pre-configured lenses within them. No Settings lenses clear any current lens settings.

Three variable Corner Chart

Map X, Y, and Z

Three Variable Center Chart

X, Y, Z plus Mix & Max to (-X,X respectively) for center zero point

Heat Map

Add Y to get

Bar Chart

One Variable Chart

Two Variable Chart

Similar to one variable; this one also maps on X

Circle Chart

Wheel Chart

Add Z to get

Candlestick chart

Two Variable Scatter Plot

Good for printing (and movies!)

2D Network Layout

Try manual positioning your objects to clean up the layout

3D Network Layout