

# RE-ATTACH AN EXCEL FILE

## Purpose

After you import an excel file into Quantum4D, Quantum4D will “remember that file, and if you make updates to the file, you can re-import the file and it will add the new information to the objects and / or relations in the space. However, if you move or rename the file, this function will not work properly. In order to remedy the situation you must re-attach the excel file

## Manage External Data

1. Find the Attribute drop down menu (fig 1)

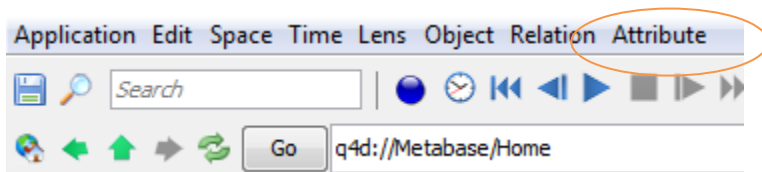


Figure 1

2. Select Manage External data (fig 2)

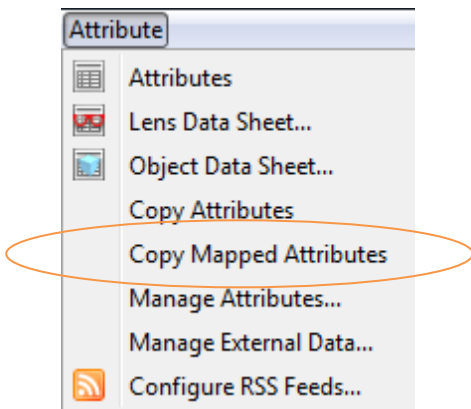
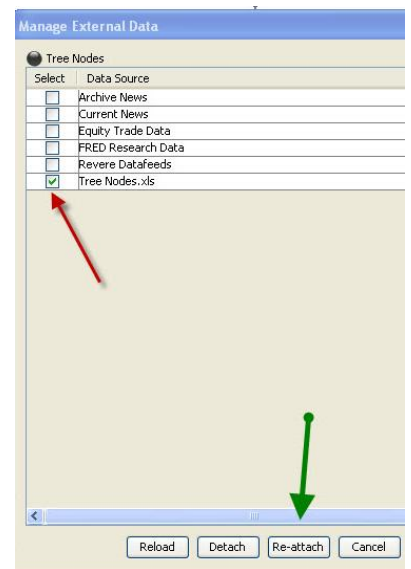


Figure 2

3. Select the data you want to re-attach (in this case “Tree Nodes”) and press the Re-attach button (fig 3)



4. Select your file and press the Open button (fig 4)

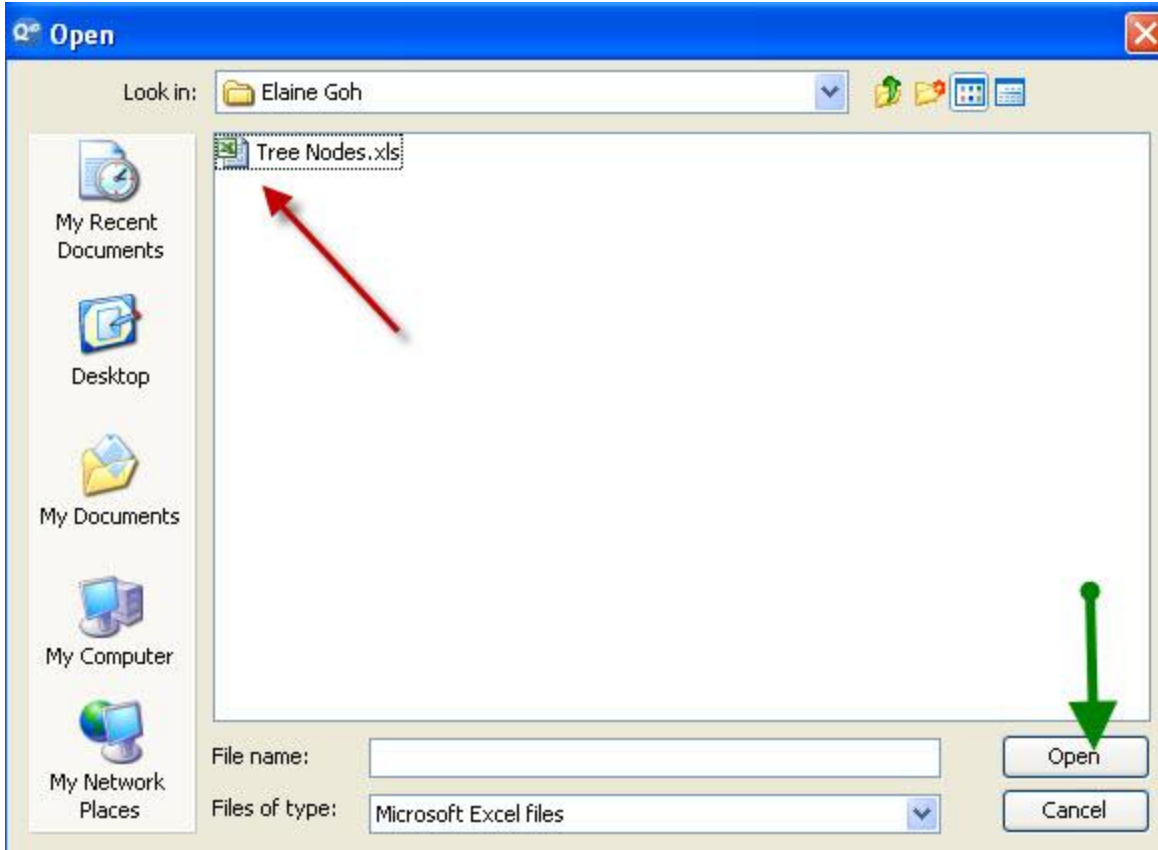


Figure 3