

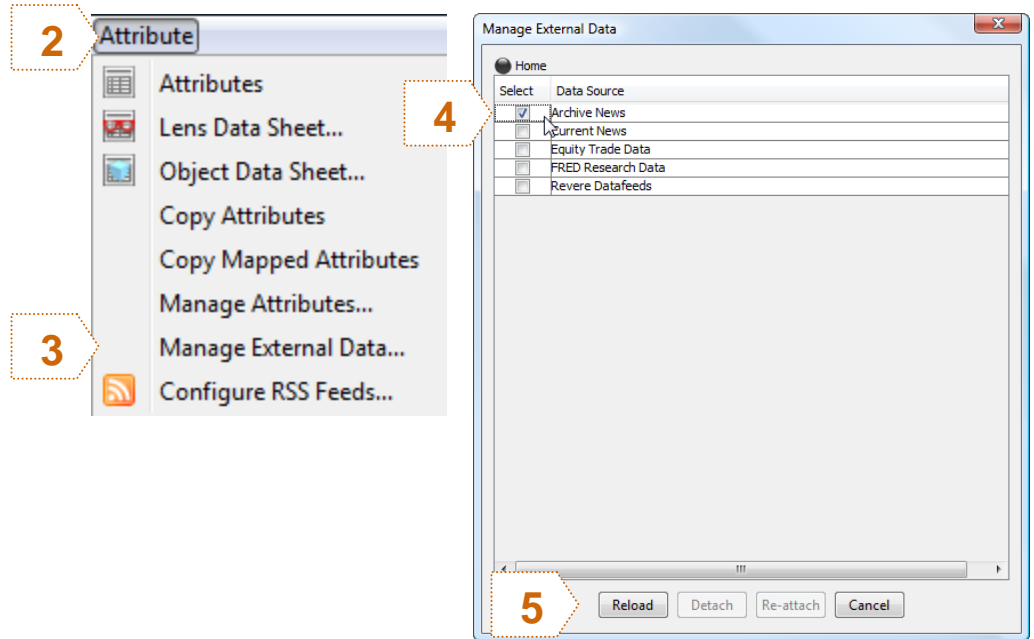
HOW-TO | ADD NEWS TO YOUR VIEW

This document explains how to get flags to appear showing news items at points of anomalous volatility.

Get Archive or Current News

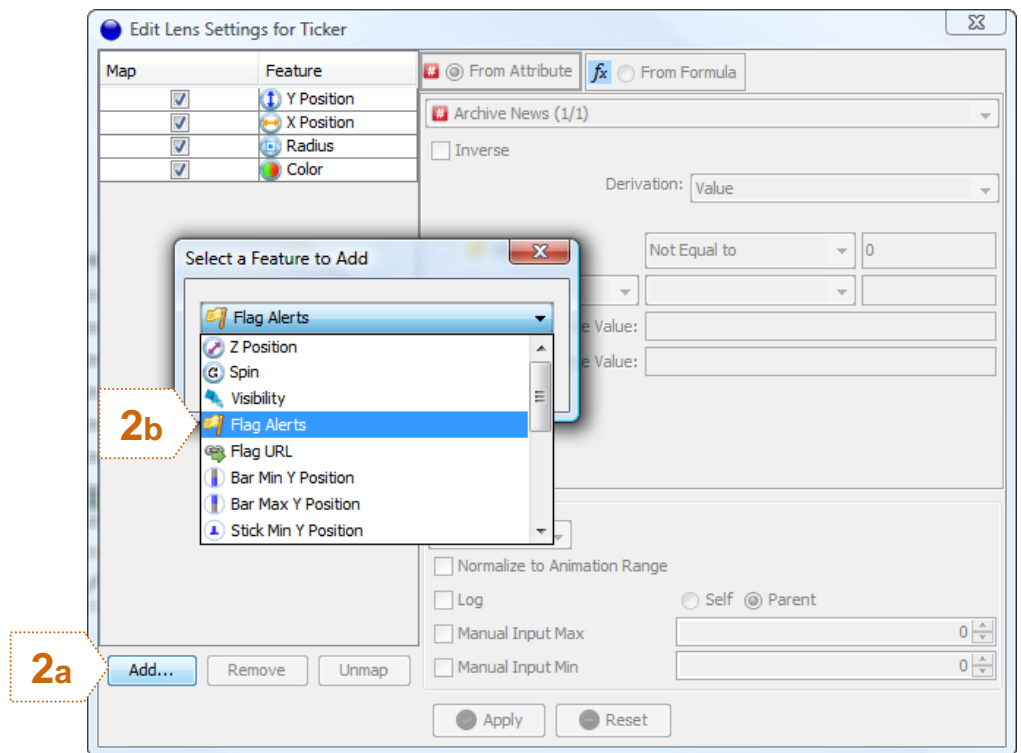
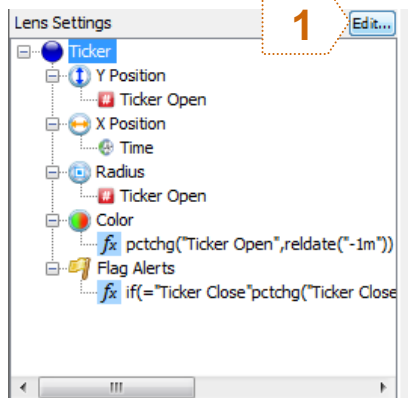
1. Select object
2. Click on the Attribute Menu
3. Select Manage External data
4. Select Archive news
5. Click Reload

Archive news items have now been added to the selected object.

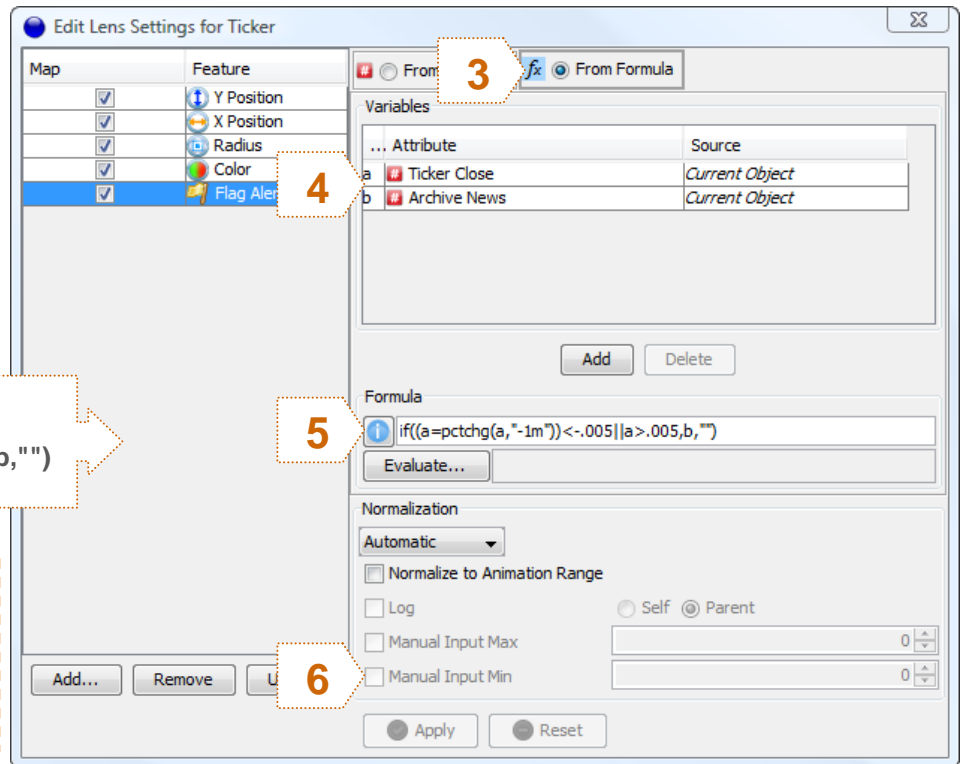


Map Flags

1. Open the Lens Settings Panel
2. Add the Flag alerts feature



3. Select "From Formula"
4. Add attributes (second attribute must be "Archive News")
5. Use the following formula to show the flag only when data is interesting.
6. Click Apply



Criteria for when flags are shown:
`if((a=pctchg(a, "-1m"))<-.005||a>.005,b, "")`

NOTE! In the formula you'll need to change the variable ".005" and "-.005" to fit the range of the variability in your data and the amount of news you want to see.

Animate and See Pertinent News Items

